



Title Plan - LT 604318

DRAFT

Survey Number LT 604318
Surveyor Reference P24-156 Arran Hill Stage 2A 2C
Surveyor Samantha Kate Muirhead
Survey Firm Wood & Partners Consultants Ltd
Surveyor Declaration

Survey Details

Dataset Description Lots 64 to 71, 130 to 139 and 9000 Being a Subdivision of Lot 9000 DP 594022
Status Initiated
Land District North Auckland
Submitted Date
Survey Class Class A
Survey Approval Date
Deposit Date

Territorial Authorities

Auckland Council

Comprised In

RT 1147759

Created Parcels

Parcels	Parcel Intent	Area	RT Reference
Lot 130 Deposited Plan 604318	Fee Simple Title	0.0734 Ha	1185751
Lot 131 Deposited Plan 604318	Fee Simple Title	0.0551 Ha	1185752
Lot 132 Deposited Plan 604318	Fee Simple Title	0.0606 Ha	1185753
Lot 133 Deposited Plan 604318	Fee Simple Title	0.0619 Ha	1185754
Lot 134 Deposited Plan 604318	Fee Simple Title	0.0613 Ha	1185755
Lot 135 Deposited Plan 604318	Fee Simple Title	0.0595 Ha	1185756
Lot 136 Deposited Plan 604318	Fee Simple Title	0.0573 Ha	1185757
Lot 137 Deposited Plan 604318	Fee Simple Title	0.0504 Ha	1185758
Lot 138 Deposited Plan 604318	Fee Simple Title	0.0509 Ha	1185759
Lot 139 Deposited Plan 604318	Fee Simple Title	0.0654 Ha	1185760
Lot 64 Deposited Plan 604318	Fee Simple Title	0.0658 Ha	1185761
Lot 65 Deposited Plan 604318	Fee Simple Title	0.0540 Ha	1185762
Lot 66 Deposited Plan 604318	Fee Simple Title	0.0540 Ha	1185763
Lot 67 Deposited Plan 604318	Fee Simple Title	0.0728 Ha	1185764
Lot 68 Deposited Plan 604318	Fee Simple Title	0.0765 Ha	1185765
Lot 69 Deposited Plan 604318	Fee Simple Title	0.0747 Ha	1185766
Lot 70 Deposited Plan 604318	Fee Simple Title	0.0750 Ha	1185767
Lot 71 Deposited Plan 604318	Fee Simple Title	0.0696 Ha	1185768
Area AA Deposited Plan 604318	Covenant - Land		
Area AB Deposited Plan 604318	Covenant - Land		
Area AC Deposited Plan 604318	Covenant - Land		
Area AD Deposited Plan 604318	Covenant - Land		
Area AE Deposited Plan 604318	Covenant - Land		
Area AF Deposited Plan 604318	Covenant - Land		



Title Plan - LT 604318

DRAFT

Created Parcels

Parcels	Parcel Intent	Area	RT Reference
Area AG Deposited Plan 604318	Covenant - Land		
Area AH Deposited Plan 604318	Covenant - Land		
Area AI Deposited Plan 604318	Covenant - Land		
Area AJ Deposited Plan 604318	Covenant - Land		
Area AK Deposited Plan 604318	Covenant - Land		
Area AL Deposited Plan 604318	Covenant - Land		
Area AM Deposited Plan 604318	Covenant - Land		
Area AN Deposited Plan 604318	Covenant - Land		
Area AO Deposited Plan 604318	Covenant - Land		
Area AP Deposited Plan 604318	Covenant - Land		
Area AQ Deposited Plan 604318	Covenant - Land		
Area BA Deposited Plan 604318	Covenant - Land		
Area BB Deposited Plan 604318	Covenant - Land		
Area BC Deposited Plan 604318	Covenant - Land		
Area BD Deposited Plan 604318	Covenant - Land		
Area BE Deposited Plan 604318	Covenant - Land		
Area BF Deposited Plan 604318	Covenant - Land		
Area BG Deposited Plan 604318	Covenant - Land		
Area BH Deposited Plan 604318	Covenant - Land		
Area BI Deposited Plan 604318	Covenant - Land		
Area BJ Deposited Plan 604318	Covenant - Land		
Area BK Deposited Plan 604318	Covenant - Land		
Area BL Deposited Plan 604318	Covenant - Land		
Area BM Deposited Plan 604318	Covenant - Land		
Area BN Deposited Plan 604318	Covenant - Land		
Area BO Deposited Plan 604318	Covenant - Land		
Area BP Deposited Plan 604318	Covenant - Land		
Area BR Deposited Plan 604318	Covenant - Land		
Lot 9000 Deposited Plan 604318	Fee Simple Title	5.7706 Ha	1185769
Total Area		<u>6.9088 Ha</u>	

LT 604318 Schedule/Memorandum

Land registration district
North Auckland

Territorial authority
Auckland Council

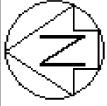
DRAFT

Notes

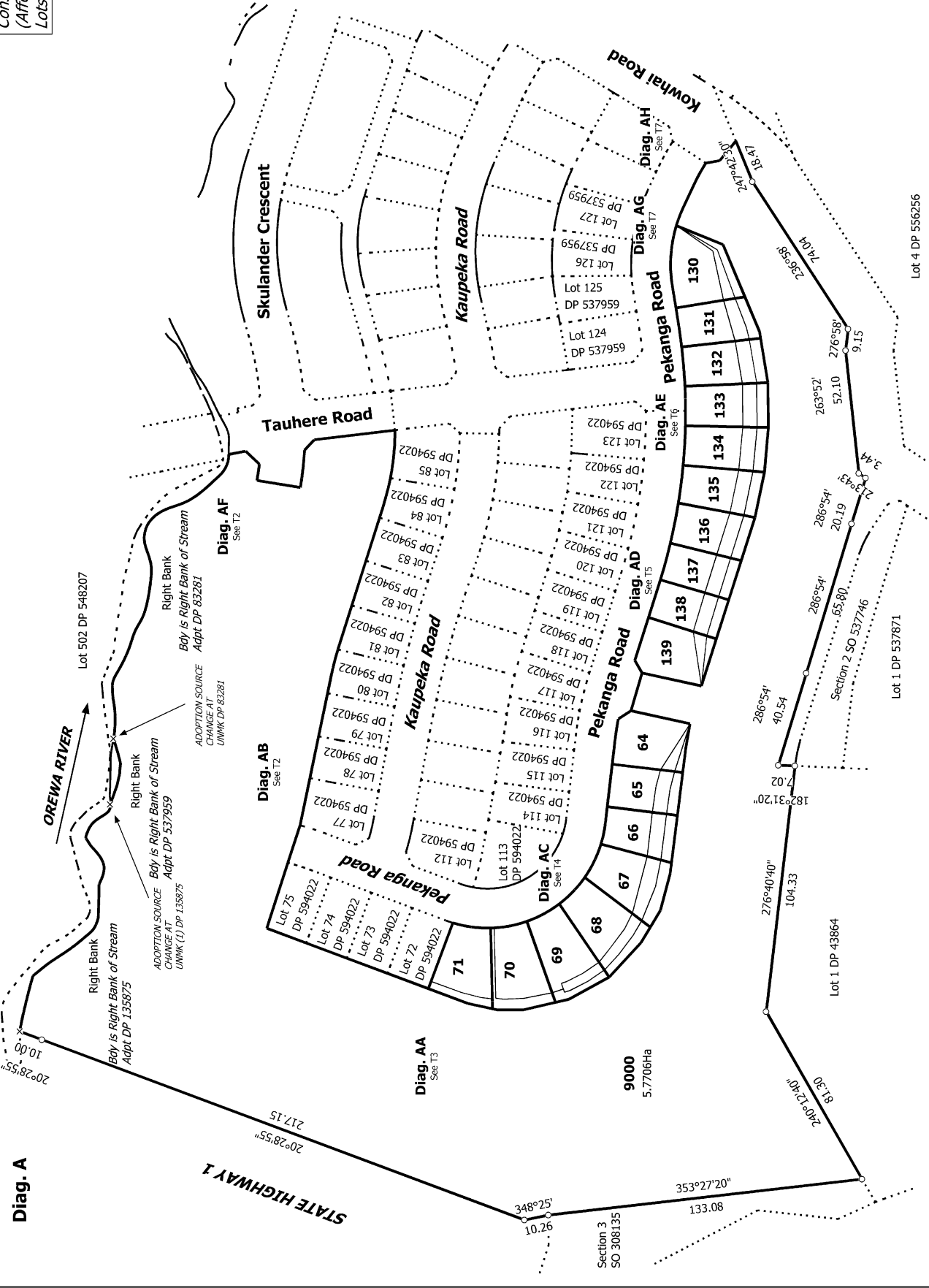
Parcels shown with a prefix of *HL* include height-limited boundaries

Areas AA - AQ are subject to no-build zone land covenants

BA - BP and BR are subject to specific design zone land covenants



Subject to Part IVA
 Conservation Act 1987
 (Affects land formerly
 Lots 1 and 2 DP 197353)



T 1/7

Title Plan
 LT 604318
 DRAFT

Surveyor: Samantha Kate Muirhead
 Firm: Wood & Partners Consultants Ltd

Lots 64 to 71, 130 to 139 and 9000 Being a Subdivision of Lot 9000 DP 594022

Land District: North Auckland
 Digitally Generated Plan
 Generated on: 30/07/2024 4:21pm Page 4 of 10

Lot 4 DP 556256

Lot 1 DP 537871

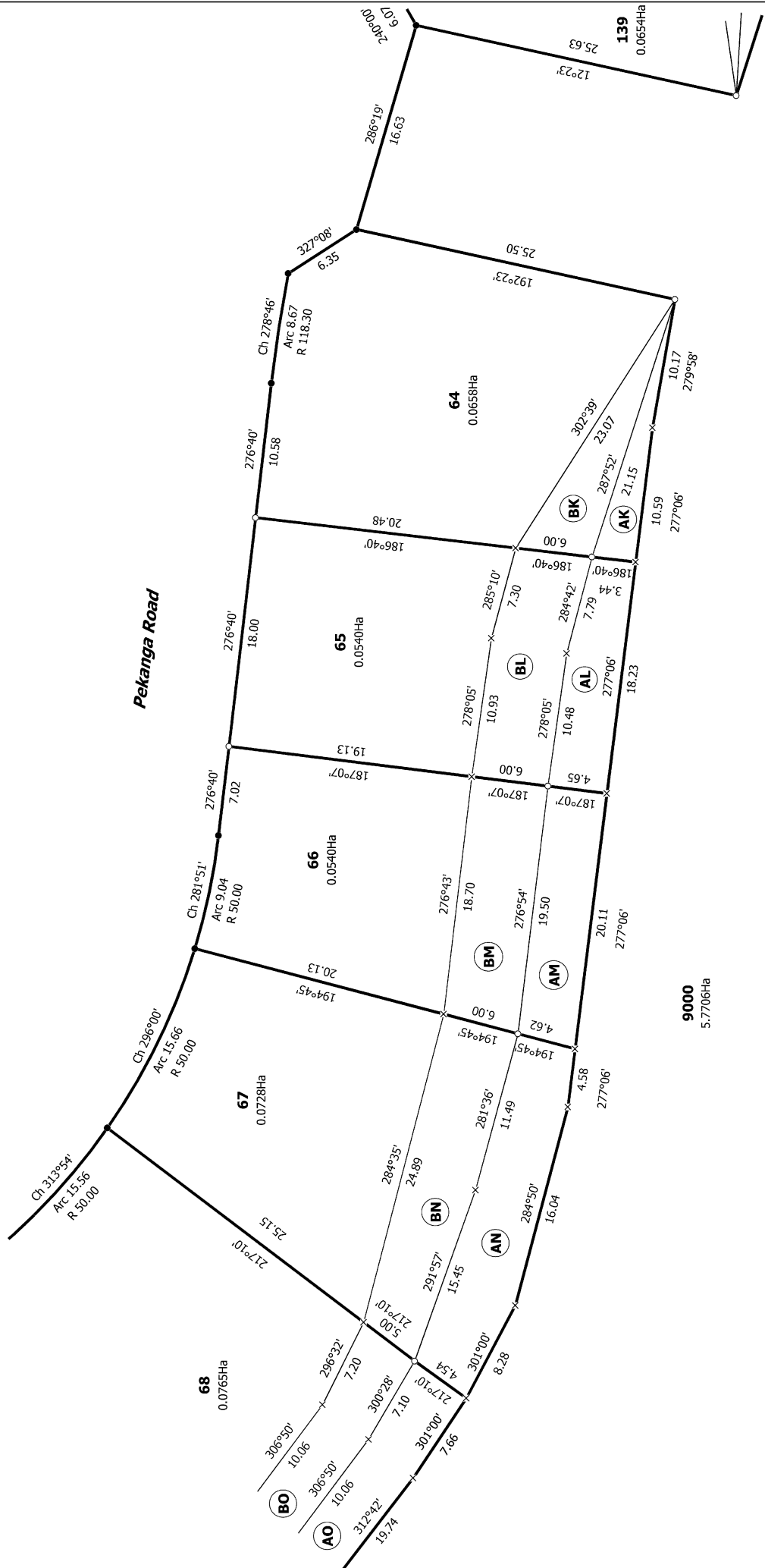
Lot 1 DP 43864

9000
 5.7706Ha

Section 3
 SO 308135

Diag. AC

Subject to Part IVA
Conservation Act 1987
(Affects land formerly
Lots 1 and 2 DP 197353)

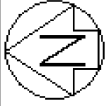


T 4/7

Lots 64 to 71, 130 to 139 and 9000 Being a Subdivision of Lot 9000 DP 594022

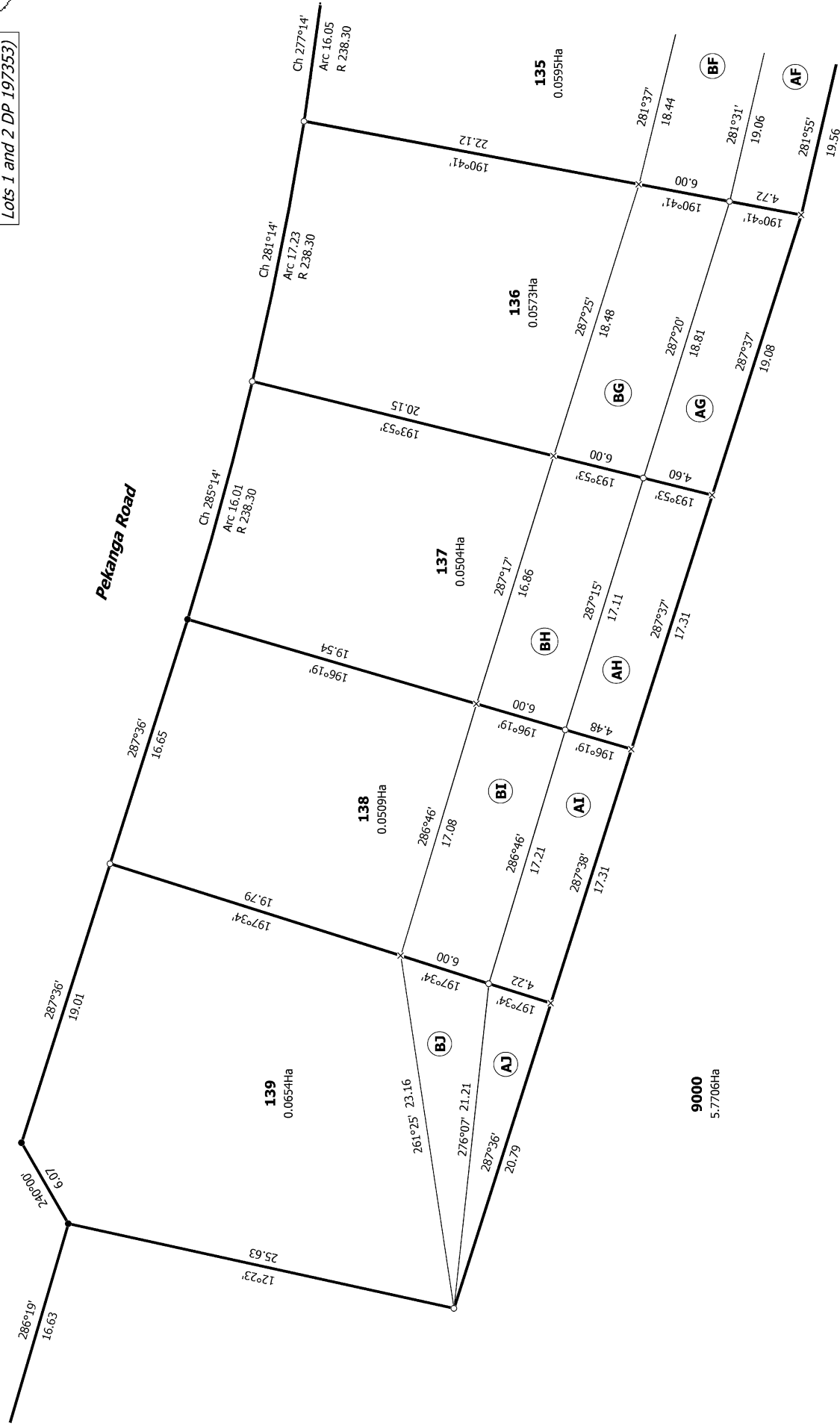
Surveyor: Samantha Kate Muirhead
 Firm: Wood & Partners Consultants Ltd

Title Plan
 LT 604318
DRAFT



Subject to Part IVA
Conservation Act 1987
(Affects land formerly
Lots 1 and 2 DP 197353)

Diag. AD



T 5/7

Lots 64 to 71, 130 to 139 and 9000 Being a Subdivision of Lot 9000 DP 594022

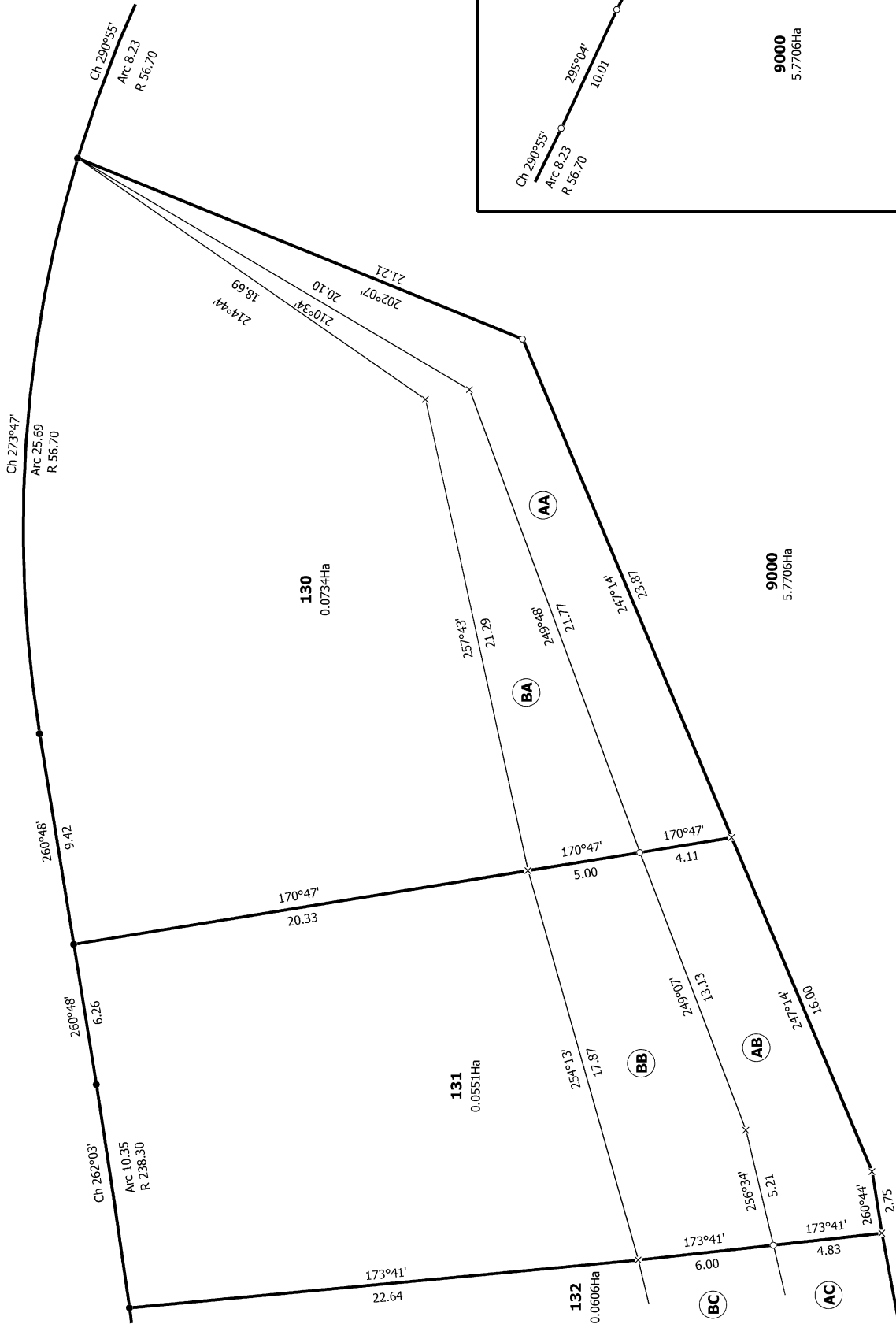
Surveyor: Samantha Kate Muirhead
Firm: Wood & Partners Consultants Ltd

Title Plan
LT 604318
DRAFT

DRAFT

Diag. AG

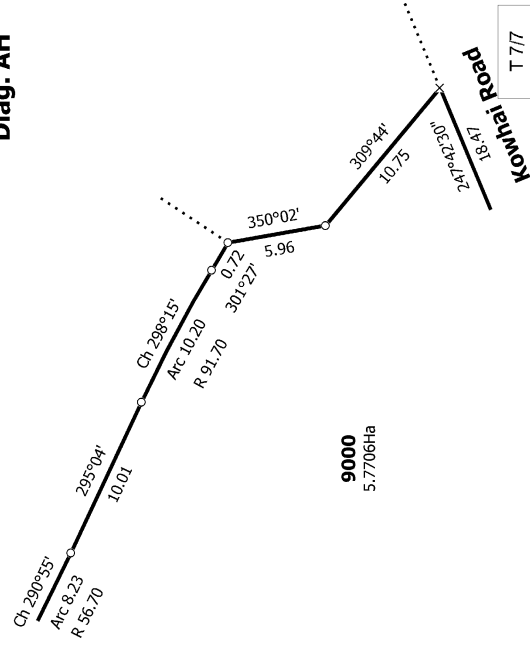
Pekanga Road



Subject to Part IVA
Conservation Act 1987
(Affects land formerly
Lots 1 and 2 DP 197353)



Diag. AH



Land District: North Auckland

Lots 64 to 71, 130 to 139 and 9000 Being a Subdivision of Lot 9000 DP 594022

Surveyor: Samantha Kate Muirhead
Firm: Wood & Partners Consultants Ltd

Title Plan
LT 604318
DRAFT

DRAFT

Digitally Generated Plan
Generated on: 30/07/2024 4:21pm Page 10 of 10

T 7/17